

Vintage Industrial Meters

Standard Ranges

50mV to 500V dc

50µA to 25A dc

5 to 500V ac

50µA to 100mA ac

Other ranges and scales also available

- Higher ranges available using external shunts and transformers
- Right hand zero, centre zero and suppressed zero options

Pointers and dials

Combination of 'pear' shaped pointer and conventional arc scale. Printed black on white background.

Zero adjuster

Positioned on the rear as standard.

Operating Temperature

-25°C to +55°C.

Terminals

15 and R15 – 6mm tabs or flying leads are available

19R and R19R – 6mm tabs are supplied as standard but threaded studs or flying leads are available.

CM20 and RCM20 – Flying leads 125mm/5" long are standard but 6mm tabs are available.

CM20SQ and RCM20SQ – Flying leads 125mm/5" long are standard but 6mm tabs are available.

Standard ranges

Range	DC					AC				
	mV	V	µA	mA	A	mV	V	µA	mA	A
0-1		●		●	●					●
0-2		●		●	●					●
0-5		●		●	*		●			●
0-10		●		●	*		●			●
0-15		●		●	*		●			●
0-20		●		●	*		●			●
0-25		●		●	*		●			●
0-50	●	●	●	●		●	●	●	●	
0-100	●	●	●	●		●	●	●	●	
0-150	●	●	●	●		●	●	●	●	
0-200	●	●	●	●		●	●	●	●	
0-250	●	●	●	●		●	●	●	●	
0-300	●	▲	●	●		▲	●	●	●	
0-400	●	▲	●	●		▲	●	●	●	
0-500	●	▲	●	●		▲	●	●	●	
CUSTOM	★	★	★	★	★	★	★	★	★	★

- Self contained
- ▲ External multiplier resistor
- * Screw terminal meter with attached shunt (External type 15 & CM20)
- ★ Other inputs available on request

Note 1 Above 25A dc external shunt required — meter will have mV input to suit shunt

Note 2 Above 100mA AC external CT required — meter will have AC mA input to suit CT secondary

If the required range is not indicated by a symbol please enquire as it may be possible to supply to your special requirements

Terminal resistance

Range	Tolerance ± 15%	Range	Tolerance ± 15%
50µA	2000Ω	250µA	255Ω
100µA	1000Ω	500µA	155Ω
200µA	365Ω	1mA	50Ω



Key Features

- Four distinctive styles
- High quality modular construction
- Taut band core magnet movements

Vintage Industrial Meters

Types 15, 19R, CM20, CM20SQ

The Vintage style meter has been introduced by Sifam in response to the demand for more classically styled meters seen on many traditional consoles and rack mounted units. The distinctive 'retro' styling with contemporary construction gives high performance at an affordable price. The Vintage Industrial range is available in four styles.

This range of Industrial analogue meters complements the Fast Response (FR) and Audio Level (AL) meters available in the same distinctive vintage styling.

Features and Benefits

- Distinctive 'retro' styling with contemporary construction
- AC and DC industrial ranges
- Taut band core magnet movement incorporated as standard
- Stronger suspension options for portable versions
- No calibration effect when mounted on a ferrous panel
- High performance at affordable price
- Illumination options

Type 15

Square 36.5mm bezel, with four fixing holes

- Suitable for less than 1U vertical rack mounted applications
- Front of panel mounting with full bezel
- Internal LED illumination option
- Constructed with glass window and high impact rear body moulding. Bezel moulded in black ABS
- DC and AC ranges

Type 19R

Rectangular 46.3 x 42.3mm bezel

- Front panel mount with full bezel, rear panel stud fixings
- Suitable for 1U rack mounted applications
- Constructed with transparent acrylic front and high impact rear body moulding. Bezel moulded in black ABS
- Internal LED illumination option
- DC and AC ranges

Type CM20

Circular, 55.6mm dia. bezel, suitable for rear panel clamp mounting

- Constructed with gloss black phenolic moulded front with glass window and high impact translucent rear body moulding
- Rear 'festoon' or internal LED illumination options
- DC and AC ranges

Type CM20SQ

Square 57.1mm bezel, front panel mount with four fixing holes

- Constructed with gloss black phenolic moulded front with glass window and high impact translucent rear body moulding
- Rear 'festoon' or internal LED illumination options
- DC and AC ranges

Europe

Elektron Technology

Woodland Road, Torquay, Devon, England TQ2 7AY

Tel : +44 (0) 1803 407700

Fax : +44 (0) 1803 407699

Email : europe@elektron-technology.com

Web : www.elektron-sifam.com

The Americas

Elektron Technology

31-315 Plantation Drive,
Thousand Palms,
California 92276, USA

Tel : 760-343-3650

Fax : 760-343-3445

Email : americas@elektron-technology.com

Web : www.elektron-sifam.com

China and Asia

Elektron Technology

A2, No.23, Xin Buxin Road, Tongle
Community, Longgang Street, Longgang
District, Shenzhen, China

Tel : +86 755 3328 8988

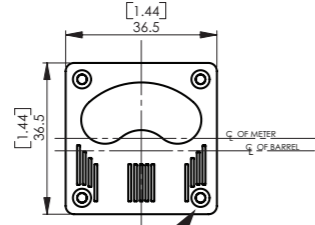
Fax : +86 755 3328 8878

Email : asia@elektron-technology.com

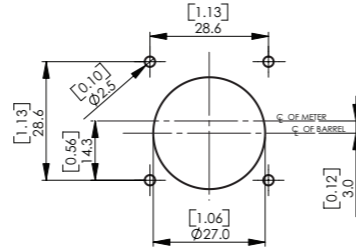
Web : www.elektron-sifam.com

Vintage Industrial Meters

Type 15 & R15

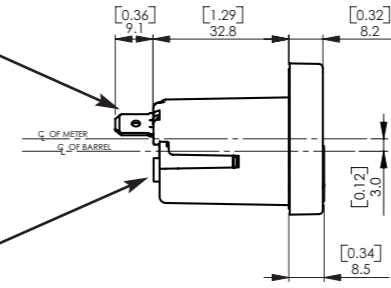


4 FIXING HOLES SUITABLE FOR M2 CSK. HD. SCREWS OR No.2-56UNC CSK. HD. SCREWS

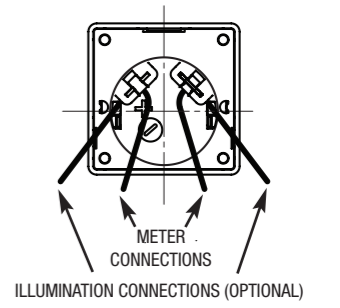


PANEL CUT OUT DETAILS

OPTIONAL 'TAB TERMINALS' FOR METER CONNECTIONS ONLY 6.3 X 0.8 (1/4" x .032")

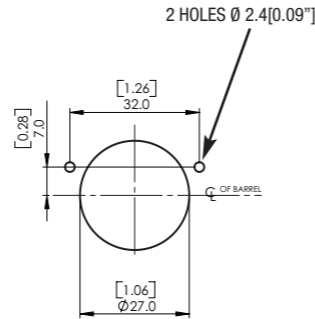
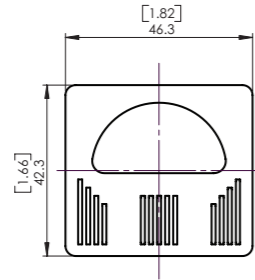


REAR ZERO ADJUSTMENT ONLY

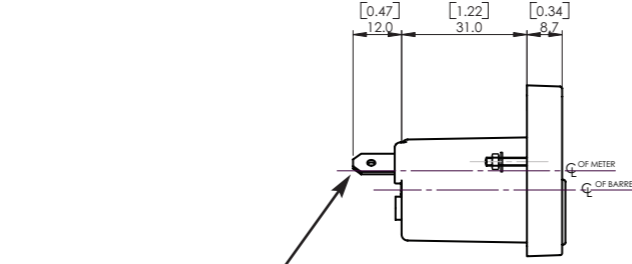


NOTE:- INCH EQUIVALENTS SHOWN IN BRACKETS

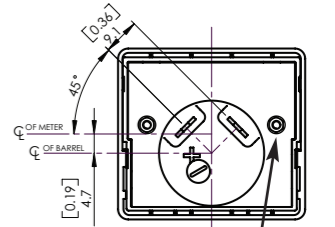
Type 19R & R19R



PANEL CUT OUT DETAILS



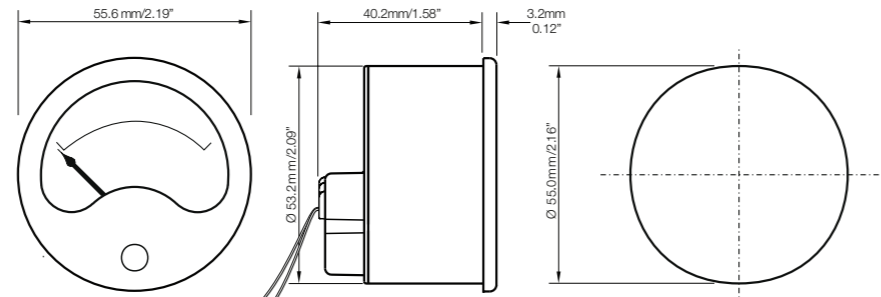
2 TERMINALS TO BS5057 6.3 [0.25"] x 0.8 [0.032"], HOLE Ø 2[0.08"]



2 FIXING STUDS M2 x 11mm [0.43"] LONG

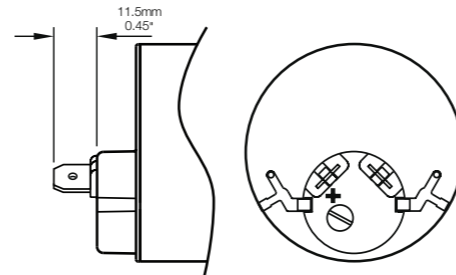
NOTE:- MAX PANEL THICKNESS 6mm [0.24"]

Type CM20 & RCM20

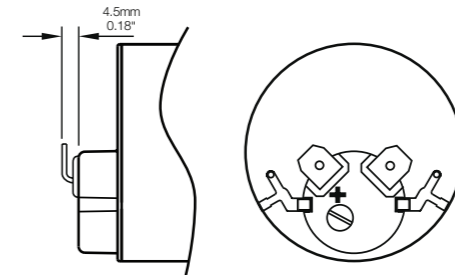


WIRE SIZE 1.2mm OD (7/0.2mm)

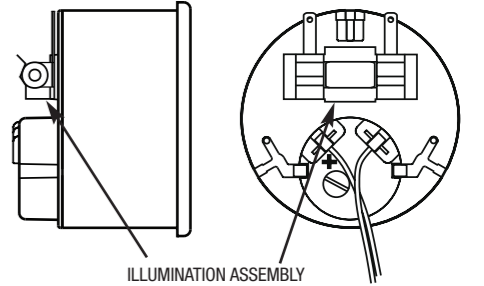
STRAIGHT TABS OPTION



BENT TABS OPTION

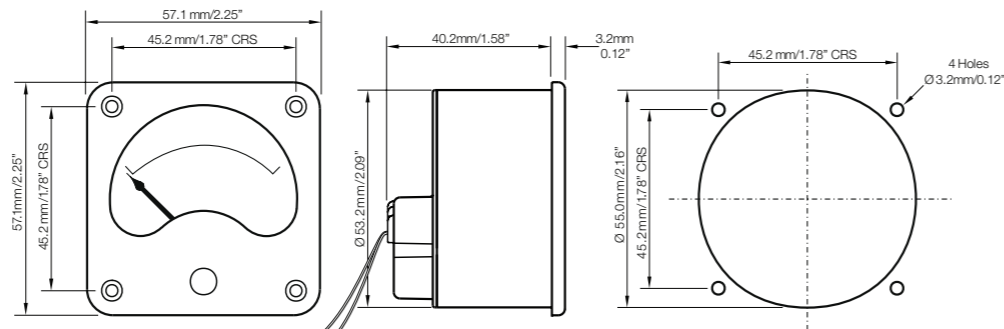


This is available as a rear mounted factory fitted option. The unit contains a Ø 6mm 'festoon' style lamp available in 6V, 12V or 24V. Please contact the sales office for more information.



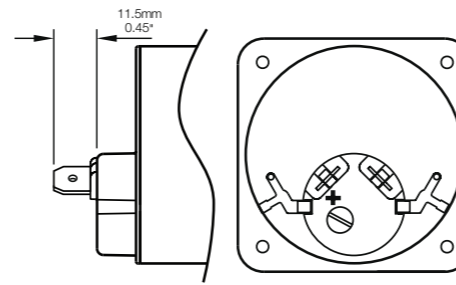
ILLUMINATION ASSEMBLY

Type CM20SQ & RCM20SQ

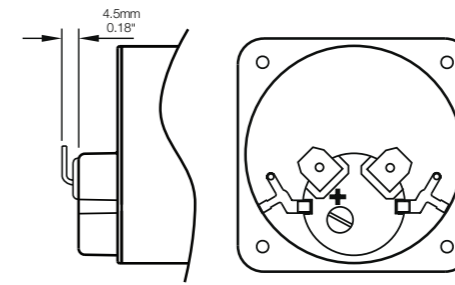


WIRE SIZE 1.2mm OD (7/0.2mm)

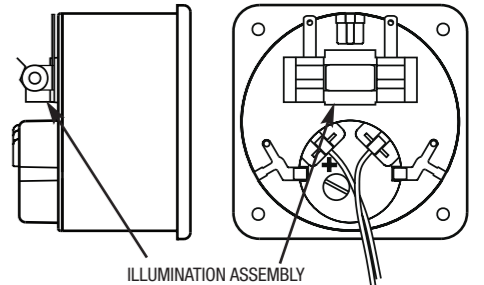
STRAIGHT TABS OPTION



BENT TABS OPTION



This is available as a rear mounted factory fitted option. The unit contains a Ø 6mm 'festoon' style lamp available in 6V, 12V or 24V. Please contact the sales office for more information.



ILLUMINATION ASSEMBLY